

SR-70 RGB



Hardwired Road Stud with RGB Power Led's

KEY FEATURES

- Ideal for airports and regular heavy vehicles traffic areas
- High mechanical resistance
- Ready for snow plough machines
- Robust construction, suitable for harsh conditions.
- Rising from road surface of 15,2mm
- 360° Lighting
- High power RGBW led's with 1W each
- High visibility due to power led's even in adverse weather conditions
- It allows drivers a higher reaction time due to the lighting range
- High brightness during day and night
- Possibility of connection of **N** elements

MODES OF OPERATION

Always On

*Other modes of operation like flashing or sequential are available with external controller

LED'S CONFIGURATION

Multidirectional

ELECTRICAL FEATURES

Power Supply	12V DC or 24V DC			
	Red	Green	Blue	White
Current Consumption ¹	134mA	200mA	200mA	520mA
Power Cable	Brown Wire (+) Blue Wire (-)			
Working Temperature	-25 °C to +85°C			

⁽¹⁾ Maximum power consumption.

OPTICAL FEATURES

Led Quantity

8 Led's

Led Type

RGBW Power Led

Led Colors

White, Red, Green, Blue

Viewing Angle

16°

MECHANICAL FEATURES

Material

Bottom Part: Aluminum

Top Part: Hard stainless steel league with good corrosion resistance and polycarbonate window

Mechanical Resistance

135 (160) Tons

* 135 – Approved by external lab;
160 – Internal approved by Sernis;

Weight

3,5 Kg

Protection Index

IP68, IK10

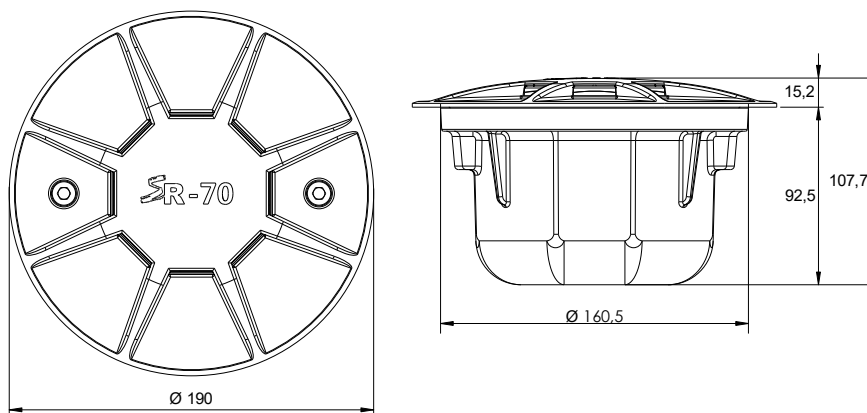
Dimensions

Ø190 x 107,7 mm

SR-70 RGB



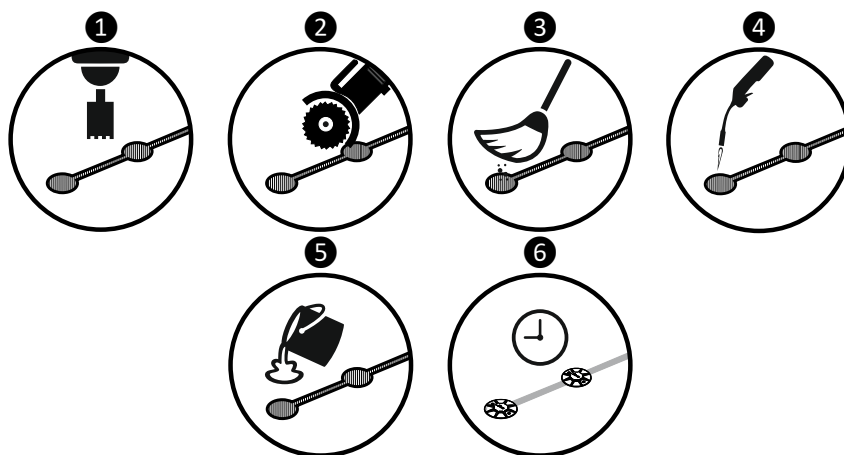
DIMENSIONS (mm)



INSTALLATION PROCEDURE



To do the installation Personal Protective Equipment must be worn during all process.



① After deciding the location where the stud will be installed, drill a hole having a minimum diameter of 165 mm and 100 mm deep.

② Using a disk cutter, open a connection between the holes with 15mm width and 60mm depth.

③ Brush any debris or dust from the hole resulting from drilling.

④ Dry the hole with a blowtorch to remove any moisture that may compromise the adhesion and effectiveness of the glue.

⑤ Pour ±2,5Kg of glue **Sikadur 42 SP** in the hole and insert the stud checking that the led's are facing the right way. Remove any excess remaining of glue.

⑥ The glue drying time may change depending on weather conditions. Consult the glue data sheet for more information.

Changing or not fulfillment of the described installation process can result in suspension of warranty.