

# SR-70P



## Hardwired Road Stud with Power Led's

### KEY FEATURES

- Ideal for airports and regular heavy vehicles traffic areas
- High mechanical resistance
- Ready for snow plough machines
- Robust construction, suitable for harsh conditions.
- Rising from road surface of 15,2mm
- 360° Lighting
- High power led's with 1W each
- High visibility due to power led's even in adverse weather conditions
- It allows drivers a higher reaction time due to the lighting range
- High brightness during day and night
- Possibility of connection of **N** elements
- Many led's color options for all kind of applications

### MODES OF OPERATION

Always On

\*Other modes of operation like flashing or sequential are available with external controller

### LED'S CONFIGURATION

Multidirectional

### ELECTRICAL FEATURES

Power Supply	24V DC
Current Consumption	400 mA <sup>1</sup>
Power Cable	Wire 1 (+)   Wire 2 (-)   Wire 3 (PWM)
Working Temperature	-25 °C to +85°C

<sup>(1)</sup> Maximum power consumption.

### OPTICAL FEATURES

Led Quantity

8 Led's

Led Type

Power Led

Led Colors

White, Warm White, Red, Amber, Green, Blue

Viewing Angle

16°

### MECHANICAL FEATURES

Material

Bottom Part: Aluminum

Top Part: Hard stainless steel league with good corrosion resistance and polycarbonate window

Mechanical Resistance

135 (160) Tons

\* 135 – Approved by external lab;  
160 – Internal approved by Sernis;

Weight

3,5 Kg

Protection Index

IP68, IK10

Dimensions

Ø190 x 107,7 mm



SERNIS – Formação e Soluções Tecnológicas Lda.  
Quinta do Carreiro, Lote 9/14 - Frossos  
4700-154 Braga - Portugal  
TEL.: +351 253 300 440 | FAX: +351 253 300 449  
E-MAIL: sernis@sernis.com | SITE: www.sernis.com

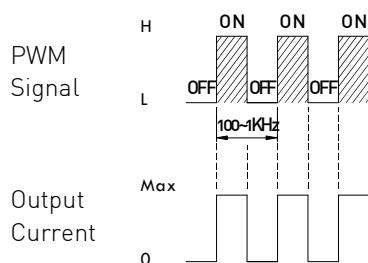
1 / 3  
04/04/2018  
Rev.2

1003

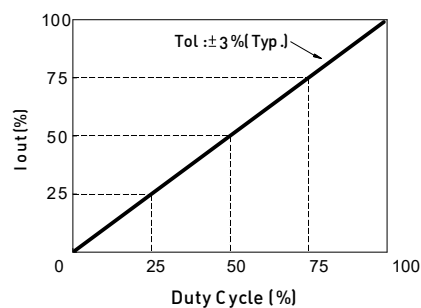
# SR-70P



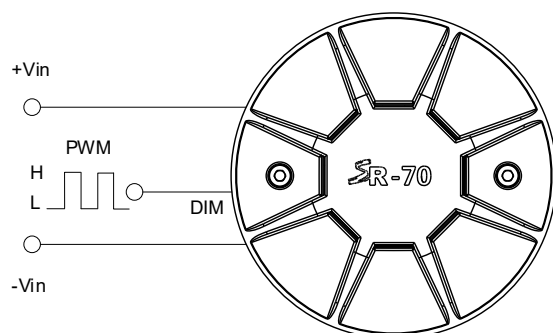
## PWM DIMMING CONTROL



During PWM dimming operation, the output current will change to PWM style.



## STANDARD APPLICATION

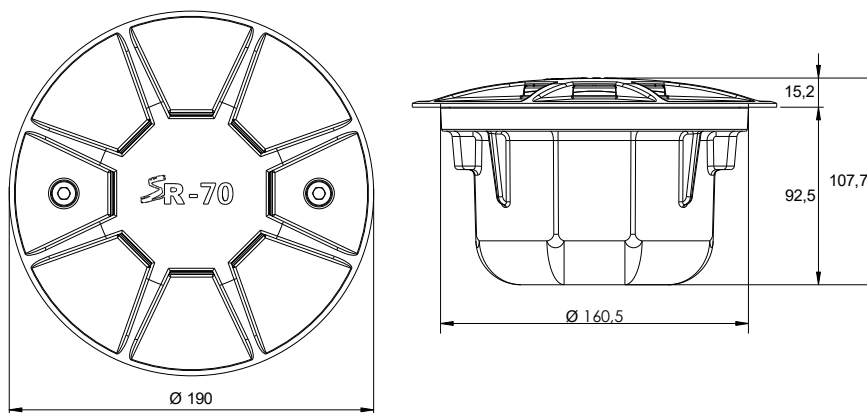


<b>PWM DIMMING &amp; ON/OFF CONTROL</b>	REMOTE ON/OFF	Leave open if not use
		Power ON with dimming: DIM ~ H >2.5 ~ 6VDC or open circuit
		Power OFF : DIM ~ H < 0.8VDC or short to -Vin
	PWM FREQUENCY	100 ~ 1KHz
	QUIESCENT INPUT CURRENT IN SHUTDOWN MODE[max.]	1mA at PWM dimming OFF and 24VDC input

# SR-70P



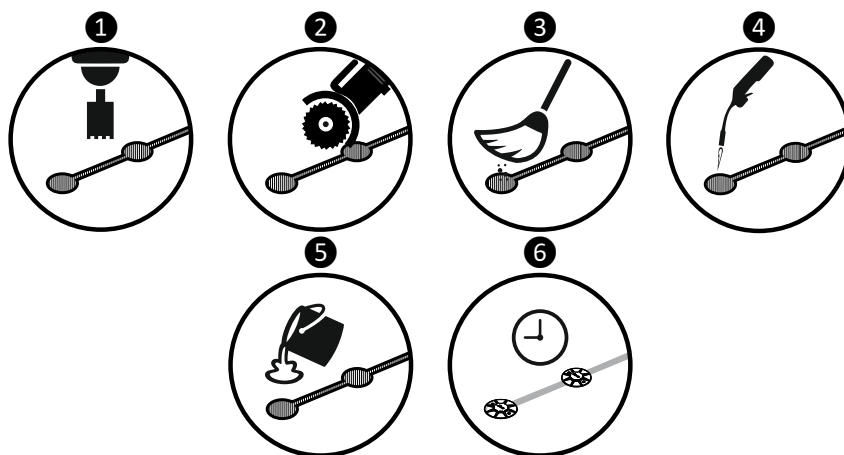
## DIMENSIONS (mm)



## INSTALLATION PROCEDURE



To do the installation Personal Protective Equipment must be worn during all process.



❶ After deciding the location where the stud will be installed, drill a hole having a minimum diameter of 165 mm and 100 mm deep.

❷ Using a disk cutter, open a connection between the holes with 15mm width and 60mm depth.

❸ Brush any debris or dust from the hole resulting from drilling.

❹ Dry the hole with a blowtorch to remove any moisture that may compromise the adhesion and effectiveness of the glue.

❺ Pour ±2,5Kg of glue **Sikadur 42 SP** in the hole and insert the stud checking that the led's are facing the right way. Remove any excess remaining of glue.

❻ The glue drying time may change depending on weather conditions. Consult the glue data sheet for more information.

Changing or not fulfillment of the described installation process can result in suspension of warranty.