

SR-45P



Hardwired Road Stud with Power Led's

KEY FEATURES

- Suitable for regular traffic areas of heavy vehicles
- High mechanical resistance: 120 Tons
- Ready for snow plough machines
- Robust construction, suitable for harsh conditions.
- Rising from road surface of 8,7mm
- High power led's with 1W each
- High visibility due to power led's even in adverse weather conditions
- It allows drivers a higher reaction time due to the lighting range
- High brightness during day and night
- Possibility of connection of **N** elements
- Possibility of different color LEDs per window
- Easy maintenance

MODES OF OPERATION

Always On

*Other modes of operation like flashing or sequential are available with external controller

LED'S CONFIGURATION

Unidirectional

ELECTRICAL FEATURES

Power Supply	24V DC
Current Consumption	200 mA ¹
Power Cable	Wire 1 (+) Wire 2 (-) Wire 3 (PWM)
Working Temperature	-25 °C to +85°C

¹⁾ Maximum power consumption.

OPTICAL FEATURES

Led Quantity
4 Led's

Led Type
Power Led

Led Colors
White, Warm White, Red, Amber, Green, Blue

Viewing Angle
16°

MECHANICAL FEATURES

Material
Bottom Part: Aluminum
Top Part: Hard metallic stainless steel
league with good corrosion resistance
and polycarbonate window

Mechanical Resistance
120 Tons

Weight
3 Kg

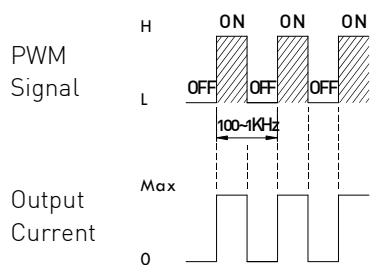
Protection Index
IP68, IK10

Dimensions
Ø160,5 x 100,7 mm

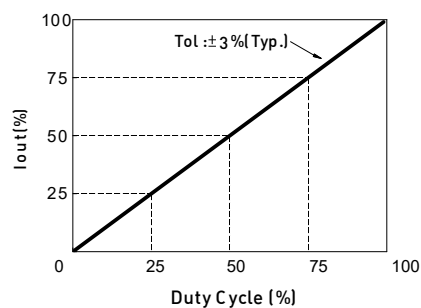
SR-45P



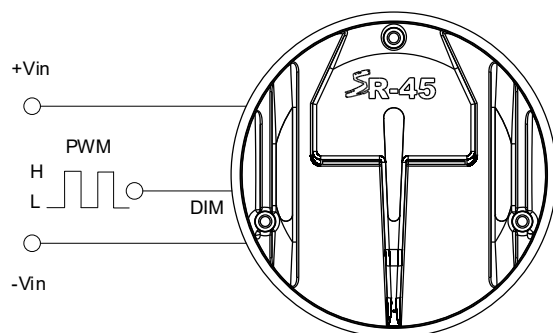
PWM DIMMING CONTROL



During PWM dimming operation, the output current will change to PWM style.



STANDARD APPLICATION



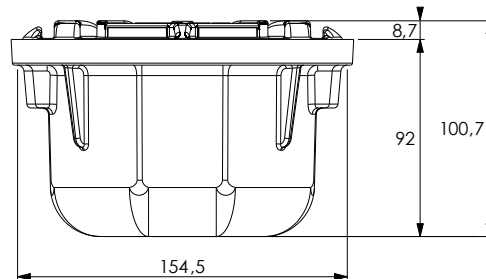
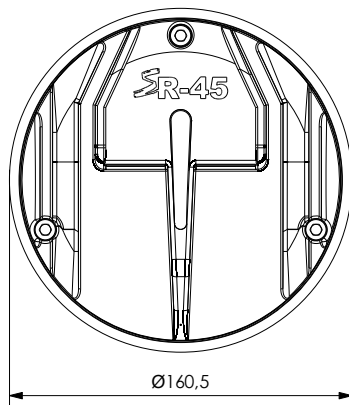
PWM DIMMING & ON/OFF CONTROL	REMOTE ON/OFF	Leave open if not use
		Power ON with dimming: DIM ~ H >2.5 ~ 6VDC or open circuit
		Power OFF : DIM ~ H < 0.8VDC or short to -Vin
	PWM FREQUENCY	100 ~1KHz
	QUIESCENT INPUT CURRENT IN SHUTDOWN MODE[max.]	1mA at PWM dimming OFF and 24VDC input

SR-45P

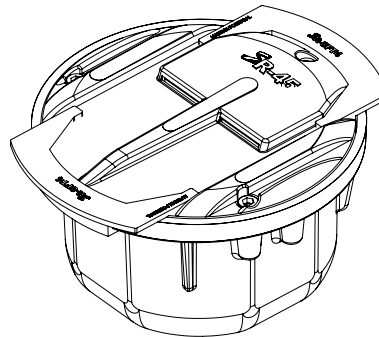
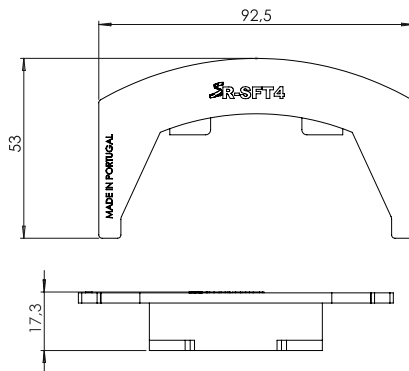


DIMENSIONS (mm)

SR-45P ROAD STUD



SR-SFT4 INSTALLATION ACCESSORY



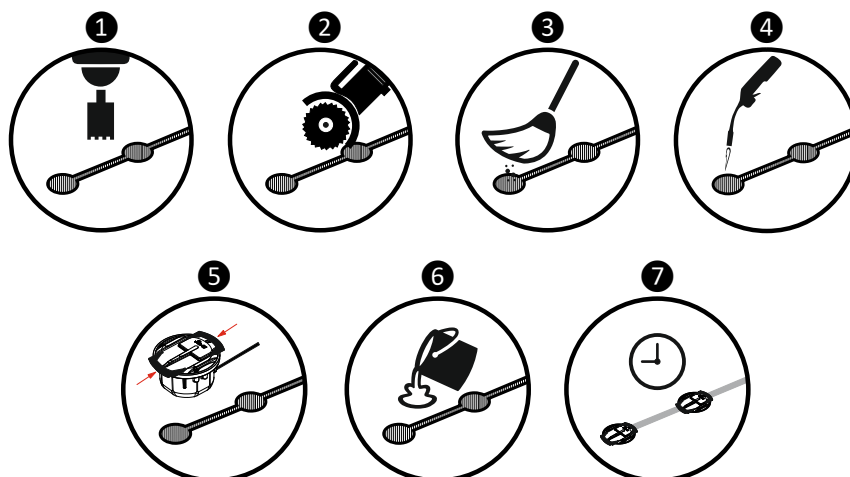
SR-45P



INSTALLATION PROCEDURE



To do the installation Personal Protective Equipment must be worn during all process.



1 After deciding the location where the stud will be installed, drill a hole having a minimum diameter of 165 mm and 100 mm deep.

2 Using a disk cutter, open a connection between the holes with 15mm width and 60mm depth.

3 Brush any debris or dust from the hole resulting from drilling.

4 Dry the hole with a blowtorch to remove any moisture that may compromise the adhesion and effectiveness of the glue.

5 Apply in each installed that will be installed the SR-SFT4 installation accessory. The accessory will help to align e keep the road stud in place during the glue drying time. This accessory will be removed at the end of the installation

6 Pour $\pm 2,5$ Kg of glue **Sikadur 42 SP** in the hole and insert the stud checking that the led's are facing the right way. Remove any excess remaining of glue.

7 The glue drying time may change depending on weather conditions. Consult the glue data sheet for more information.

After the glue has dried, the top part of the SR-SFT4 accessory should be broken and removed.

Changing or not fulfillment of the described installation process can result in suspension of warranty.