

SR-45AP-RGA



Hardwired Road Stud with Red, Green and Amber Power Led's

KEY FEATURES

- Appropriate for regular traffic zones and areas of poor visibility
- Ideal for road delineation, bends/curves, crosswalks among others applications
- Red, amber and green power led's with 1W each
- Specially developed sink is adequate to maintain a high heat dissipation and light intensity
- High visibility due to power led's even in adverse weather conditions
- It allows drivers a higher reaction time due to the lighting range
- Robust construction, suitable for harsh conditions.
- Rising from road surface of 7,3mm
- High brightness during day and night
- Possibility of connection of **N** elements
- Possibility of different color LEDs per window
- Easy maintenance

MODES OF OPERATION

Always On

*Other modes of operation like flashing or sequential are available with external controller

LED'S CONFIGURATION

Unidirectional

ELECTRICAL FEATURES

Power Supply	12V/24V DC		
	Red	Green	Amber
Current Consumption	86/46 mA	123/65 mA	90/48 mA
Power Cable	Wire 1 (+) Wire 2 (-) Wire 3 (Green PWM) Wire 4 (Red PWM) Yellow/Green (Amber PWM)		
Working Temperature	-25 °C to +85°C		

⁽¹⁾ Maximum power consumption.

OPTICAL FEATURES

Led Quantity

3 Led's

Led Type

Power Led

Led Colors

Red, Green and Amber

Viewing Angle

16°

MECHANICAL FEATURES

Material

Aluminum and Polycarbonate

Mechanical Resistance

30 Tons

Weight

2 Kg

Protection Index

IP68, IK10

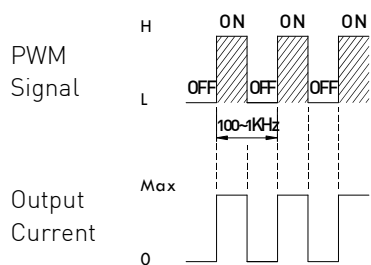
Dimensions

Ø160,5 x 99,3 mm

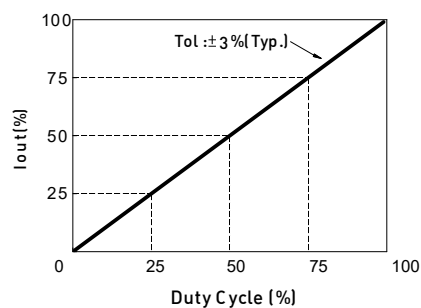
SR-45AP-RGA



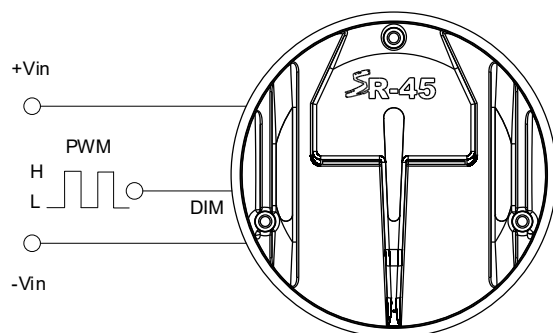
PWM DIMMING CONTROL



During PWM dimming operation, the output current will change to PWM style.



STANDARD APPLICATION

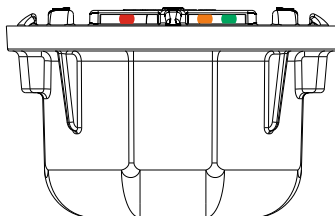
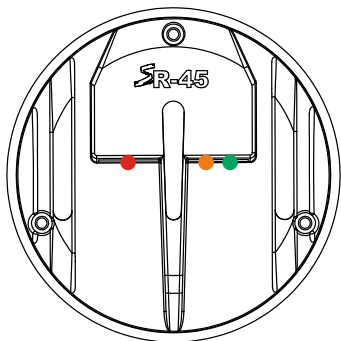


PWM DIMMING & ON/OFF CONTROL	REMOTE ON/OFF	Leave open if not use
		Power ON with dimming: DIM ~ H >2.5 ~ 6VDC or open circuit
		Power OFF : DIM ~ H < 0.8VDC or short to -Vin
	PWM FREQUENCY	100 ~1KHz
	QUIESCENT INPUT CURRENT IN SHUTDOWN MODE[max.]	1mA at PWM dimming OFF and 24VDC input

SR-45AP-RGA

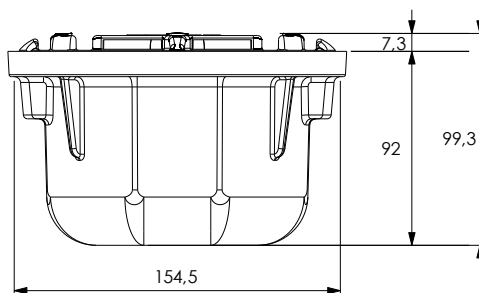
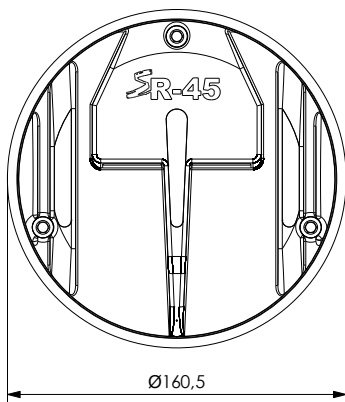


LED'S DISTRIBUTION

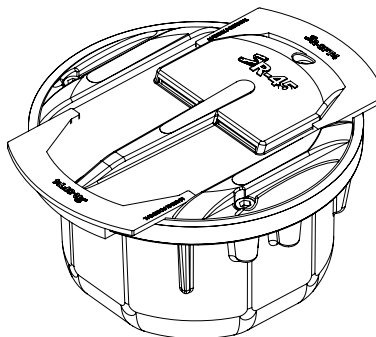
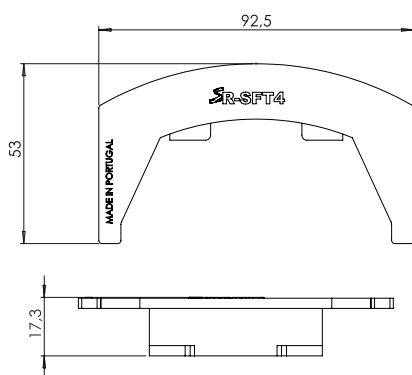


DIMENSIONS (mm)

SR-45AP-RGA ROAD STUD



SR-SFT4 INSTALLATION ACCESSORY



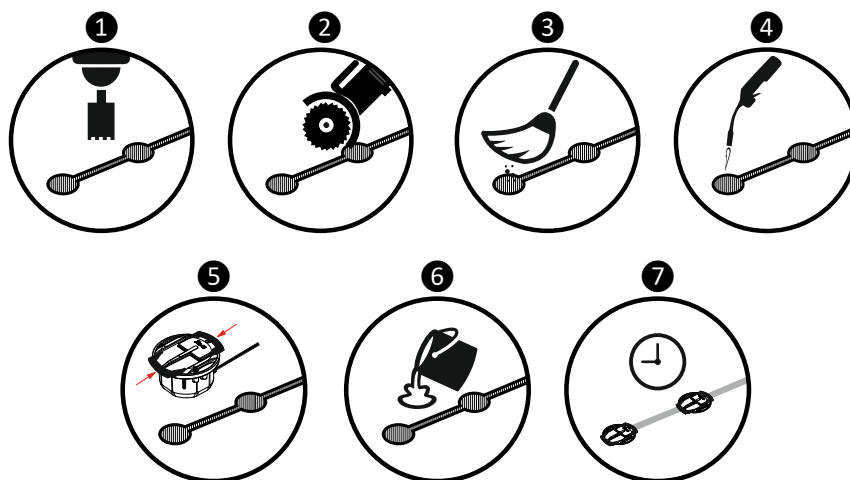
SR-45AP-RGA



INSTALLATION PROCEDURE



To do the installation Personal Protective Equipment must be worn during all process.



- 1 After deciding the location where the stud will be installed, drill a hole having a minimum diameter of 165 mm and 100 mm deep.
- 2 Using a disk cutter, open a connection between the holes with 15mm width and 60mm depth.
- 3 Brush any debris or dust from the hole resulting from drilling.
- 4 Dry the hole with a blowtorch to remove any moisture that may compromise the adhesion and effectiveness of the glue.
- 5 Apply in each installed that will be installed the SR-SFT4 installation accessory. The accessory will help to align e keep the road stud in place during the glue drying time. This accessory will be removed at the end of the installation
- 6 Pour $\pm 2,5$ Kg of glue **Sikadur 42 SP** in the hole and insert the stud checking that the led's are facing the right way. Remove any excess remaining of glue.
- 7 The glue drying time may change depending on weather conditions. Consult the glue data sheet for more information.
After the glue has dried, the top part of the SR-SFT4 accessory should be broken and removed.

Changing or not fulfillment of the described installation process can result in suspension of warranty.